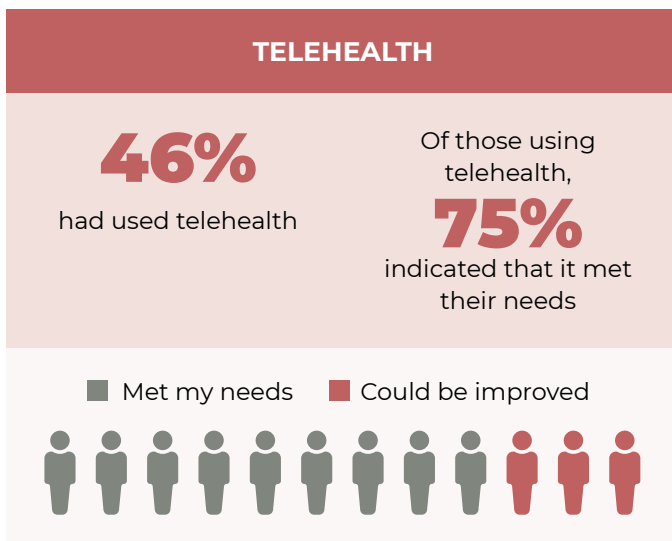
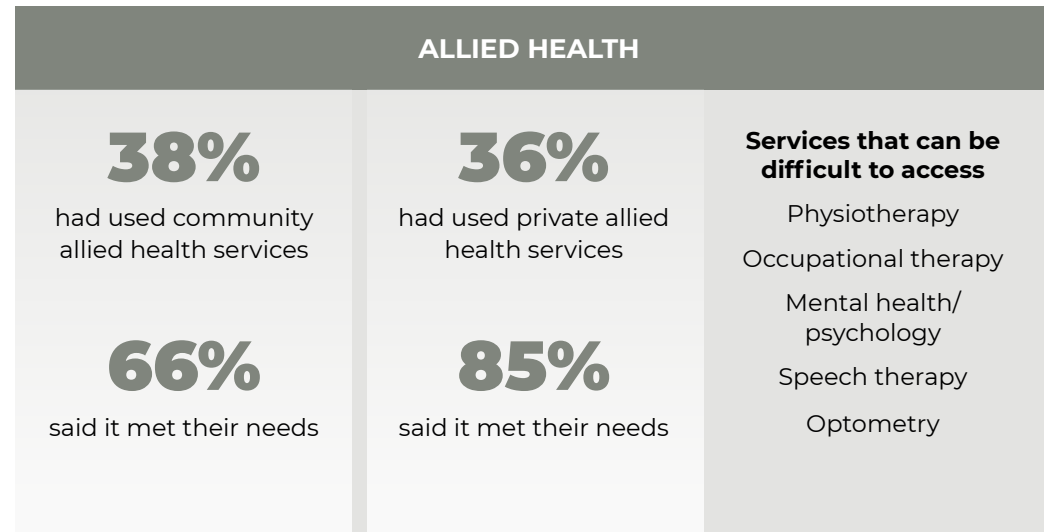




## 2022 SNOWY VALLEYS PRIMARY HEALTH SERVICE SURVEY

The Snowy Valleys Community Primary Health Service Survey asked local people about their experiences with primary health care services.



## PHARMACY, DENTAL, PATHOLOGY AND DIAGNOSTIC SERVICES

The most frequently used primary health services were pharmacy and pathology services within a respondent's town.

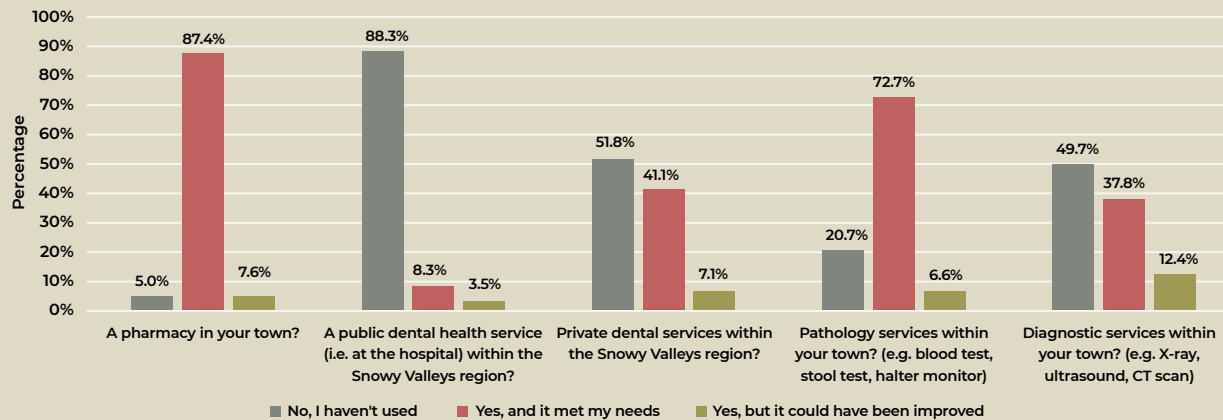
**87%**

of people accessed a local **pharmacy** and said their needs were met; while a further 8% said the service could be improved.

**73%**

of people accessed a local **pathology** and said their needs were met; while a further 7% said the service could be improved.

### Pharmacy, Dental, Pathology and Diagnostic Services



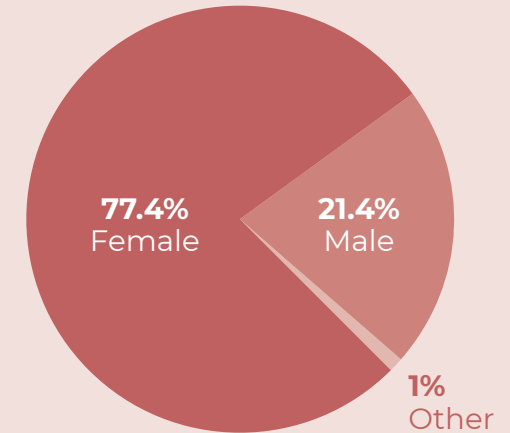
### Written comments and concerns by respondents were grouped into five clear themes:

- 1 Availability of primary care services**
- 2 Patient expectations of health care services**
- 3 Travel to access services**
- 4 Continuity of care**
- 5 Interpersonal experiences in appointments**

## SURVEY PARTICIPANTS

**579** RESPONDENTS

(5% of the eligible Snowy Valleys population)



**5.5%** identify as Aboriginal

**7.4%** identify as culturally diverse

Age	n	%
15-34	61	10.5%
35-54	184	31.8%
55-74	283	48.9%
75-94	50	8.6%
95+	1	0.2%

The Collaborative Care Program received funding through the Australian Government. The Snowy Valleys Community Primary Health Service Survey closed January 21, 2022.